

User Manual



This manual is supplied together with the device and is intended for initial familiarization with assembly of the device. More details are available at seabike.com in F.A.Q. and Service & Support sections.

SEABIKE LLC
SEABIKE.COM

DEMO VIDEO



1

Safety regulations

1. Do not use the seabike if you cannot swim.
2. When used by children, always use a life jacket.
3. It is prohibited to use it if there are any damaged or missing parts on the seabike.
4. It is prohibited to use if under the influence of alcohol or drugs.
5. Children under 12 years old without adult supervision is prohibited to use the seabike.
6. It is forbidden to use the seabike in places where there is ship routes. Danger can arise in places where small vessels pass. Be careful when using the seabike – because you are hard to be noticed if there is big waves or in low visibility.
7. We recommend using the seabike in the presence of another person who can help you if necessary.
8. It is recommended to use some watersport shoes, this will prevent injuries when operating in unequipped places and rubbing your feet with pedals.
9. It is recommended to protect the body while using the seabike with a neoprene suit or vest (a combination with a lycra suit is possible), the head with a swimming cap or a neoprene cap, hands with gloves.
10. It is important when planning a swim to take into account the speed and direction of the current. This can make swimming more difficult. It is recommended to start moving against the current to assess the possible speed of movement along a landmark or tracker. If the current is too strong, it is necessary to move across the current towards the shore.
11. When planning a long swim, we recommend that you determine the direction of the waves and wind according to the weather forecast and use the current, the direction of the waves to quickly pass part of the route.
12. It is recommended that you plan your swim as close to the coastline as possible. If you will swim to open water, use an escort vessel.

2

Assembly of the seabike

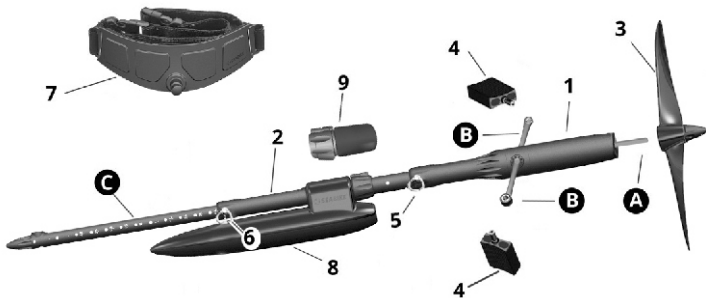
Composite modules:

1. Gear Box - 1 pc
2. Telescopic Frame - 1 pc.
3. Propeller - 1 pc.
4. Pedals - 2 pcs
5. Gear Box Screw 50 mm - 1 pc.
6. Telescopic Frame Screw 40mm - 1 pc.
7. Belt with Connector - 1 pc.
8. Propeller Screw - 1 piece

9. Movable Float - 1pc
10. Additional weight * - 1 pc

Mounting mechanisms:

- A. Propeller Screw Mount
- B. Pedal lock
- C. Belt Connector Slot in Telescopic Frame



Step 1

Connect the gearbox (1) and the telescopic frame (2) as far as it will go, having previously unscrewed the gearbox screw 50mm (5).

Please note The screws cannot be completely removed from the frame body.

Align the white markers on the parts and tighten the gearbox screw 50mm (5) holding onto the screw ring.



! THE GEAR BOX SCREW SHOULD ALWAYS BE ON THE LEFT

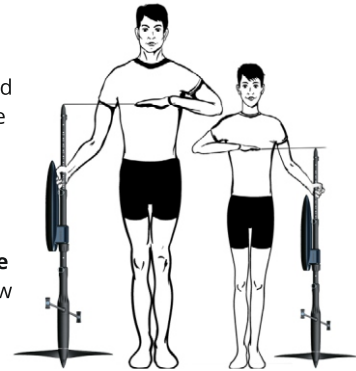
*Purchase separately as an accessory on our website www.seabike.com

3

Step 2

Unscrew the telescopic frame screw 40mm (6) (the screw cannot be removed from the frame) from the transport hole and adjust and align the markers at the desired height value as shown in the figure.

Align the markers at the desired size, insert and tighten the telescopic frame screw 40mm (6) holding onto the screw ring. For storage, use the transport Position shown in the figure.

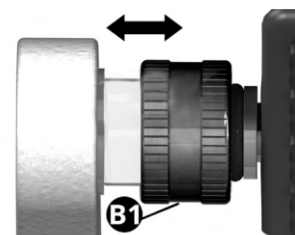


TRANSPORTATION POSITION



Step 3

To install the pedal (4), it is necessary to pull back the pedal lock ring (B1), insert the pedals (4) into the lock (B). Installation of both pedals are the same.



4

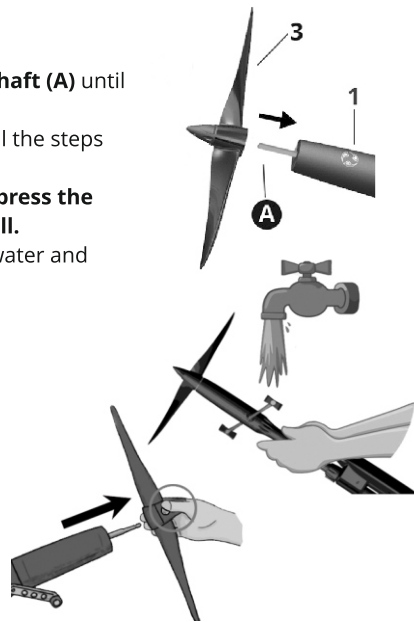
Step 4

Install **the propeller (3)** on **the shaft (A)** until it clicks.

To disassemble the seabike, do all the steps in reverse order.

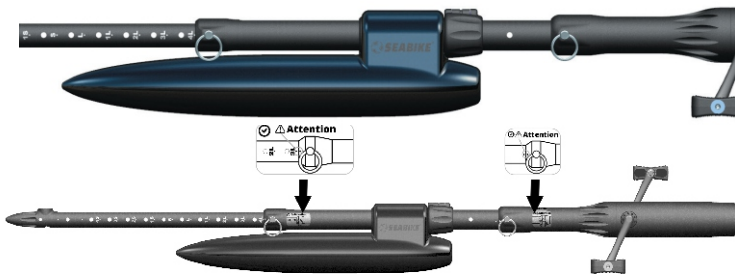
Note To remove the propeller, press the button on the propeller and pull.

After use, rinse parts with fresh water and dry.



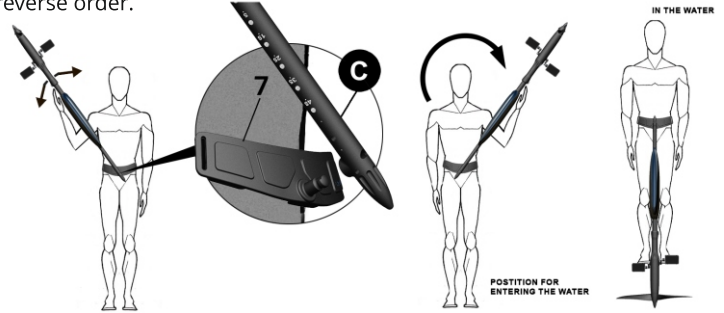
Exploitation

Important! In order for the propeller to rotate in the correct direction, make sure that all assembly markers on the frame joints are observed and the movable float is turned in the correct direction.



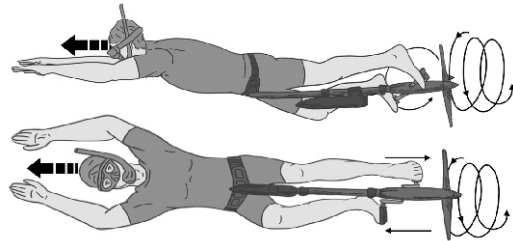
Seabike belt with connector

Put on **the belt with fastening (7)** and connect the Fastex clasp then adjust the length of the belt so that it fits snugly on the body. Put on your mask and snorkel. Take the seabike in both hands with the propeller upwards. Right hand on gear box, left hand on the telescopic frame at bottom. Tilt the seabike to the right at an angle of approximately 45-60° (see picture). Align the slot on the telescopic frame with the pin on the belt, insert the pin into the slot. Slightly rocking to the right and left with simultaneous pressing, achieve a snug fit of the seabike to the belt. Make sure the seabike is securely fastened to your belt. Move the seabike to the left and enter the water. To Remove the seabike do the operations in the reverse order.



In the water, move the seabike down so that it is between your legs and you can put your feet on the pedals. (When the seabike is connected to your belt, do not move it directly in front of you.) Make sure that when you move it to the side, there is no one within the seabike's radius of possible movement.

Lie on your stomach, put your feet on the pedals and start moving forward by turning the pedals, like on a bicycle, arms shoulder-width apart, stretched out in front of you. If you want to change direction or make a turn with the seabike, turn your body to the left or the right.



5

6

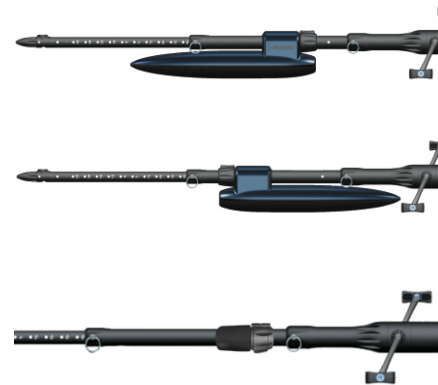
After that, start swimming, controlling your body position while swimming. If the propeller are still above the water, remove the second float inside the gear cover.

It is possible that the propeller, on the contrary, are too deep in the water. Start moving the float little by little towards the bottom of **the telescopic frame (2)**.

After that, if the propeller is still too deep, the float's position on the telescopic frame should be changed as shown in the figure.

The thickness of your wetsuit, and which water you will swim in affects your balance.

When using your seabike in salt water with a wetsuit, replace the movable float with the additional weight* that is provided, adjust the position of the propeller by moving the weight up or down the seabike Frame



For the convenience of transporting the seabike, pack all the parts in the seabike bag, and connect **the Belt with Connector (7)** to the bag at 2 points with Fastex fasteners. Carry the seabike bag on your shoulder, using **the Belt with Connector (7)** as a shoulder strap.



*Purchase separately as an accessory on our website www.seabike.com

7

8

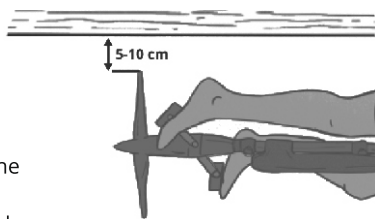
Seabike belt with connector

Put on **the belt with fastening (7)** and connect the Fastex clasp

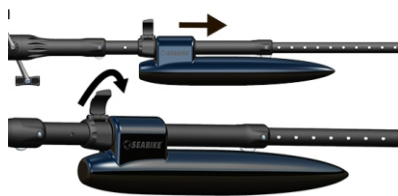
Try to swim along the beach, however not getting too close to the shallow parts. Swim in comfortable conditions - when you can clearly see the bottom, and the depth allows you to swim without touching it. If you intend to cross a river or a small bay, then be sure to choose a landmark for the direction of movement and make sure that your course does not intersect with the courses of other water transport.

Float adjustment in the water

The ideal propeller position is 5-10 cm underwater. To ensure this position, the position of the movable float on **the telescopic frame (2)** must be adjusted.



Raise the latch up, move the float to the lower position to the end of **the telescopic frame (2)**, closer to the gearbox, lower the latch. After that, start swimming, controlling your body position while swimming.



If you have moved the float to the top of the telescopic frame (2) and the propeller are still above the water. Stop, unscrew the propeller and remove the propeller. Remove the gearbox rear cover. To do this, simultaneously press two buttons (or one, depending on the design of the seabike) and turn the gearbox cover, then pull and remove the cover. Remove one of the two internal floats inside the cover and reassemble the seabike.

